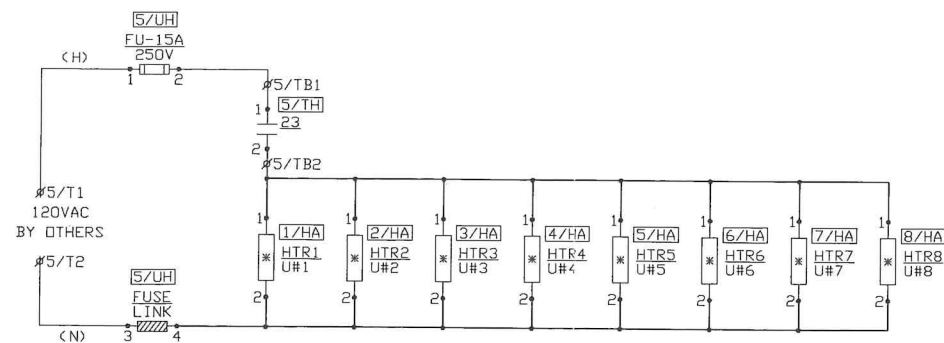
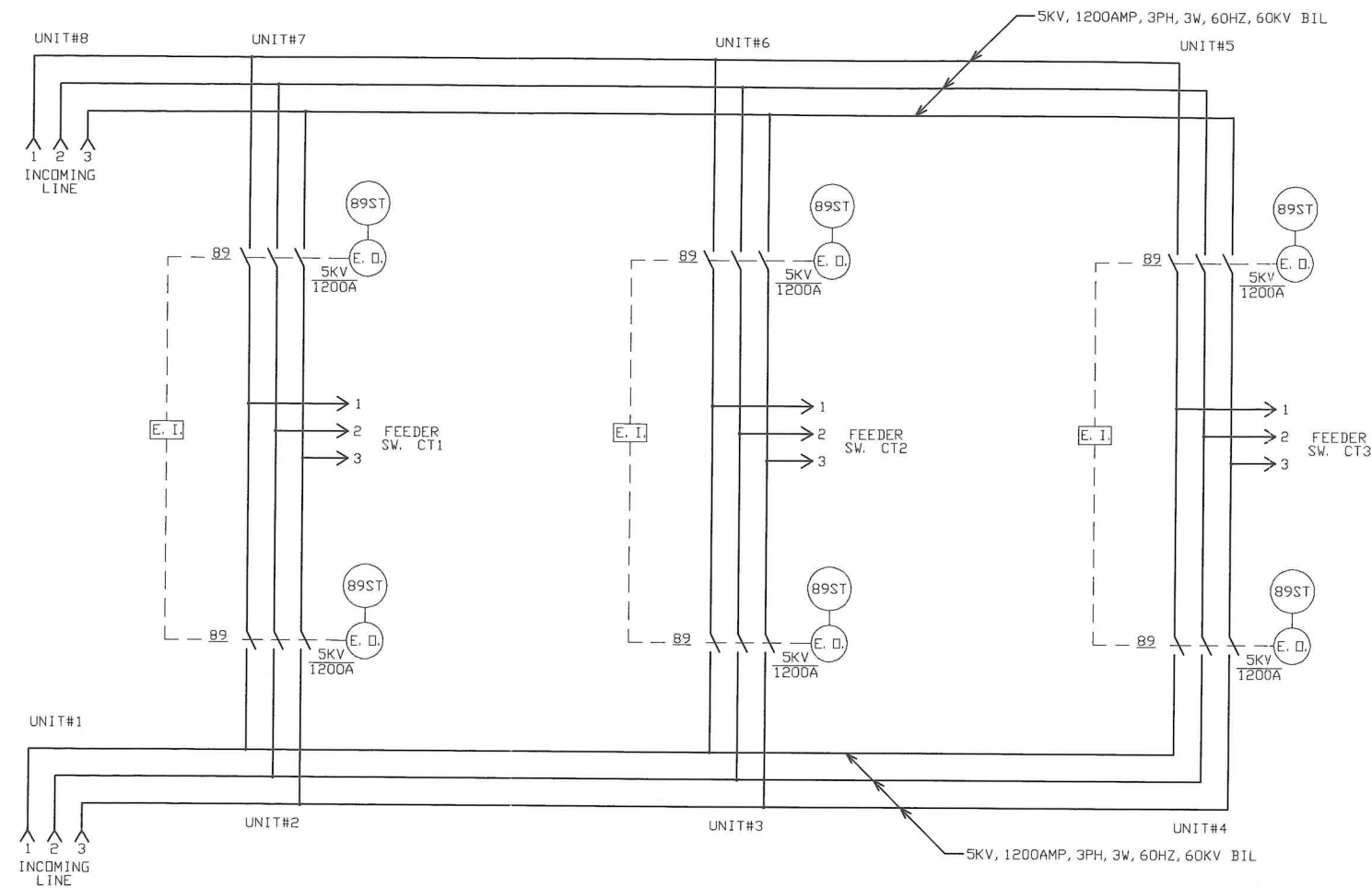
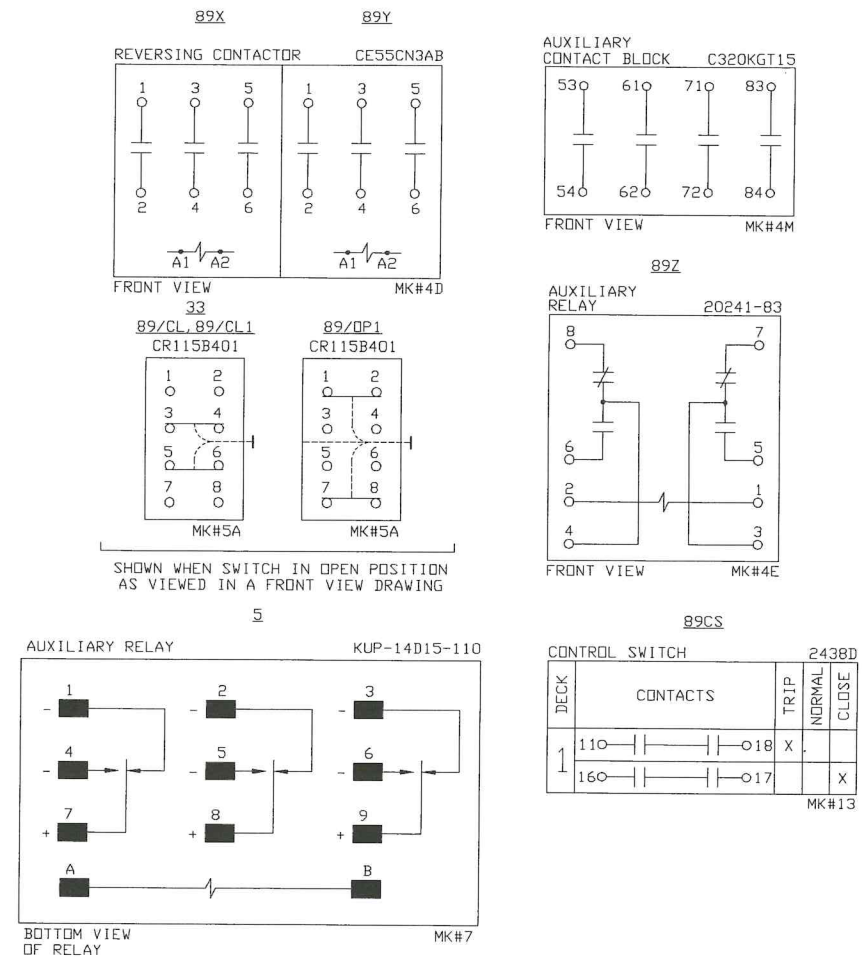


THREE LINE DIAGRAM



CUBICLE HEATER CIRCUIT
* - HEATERS SHALL BE 500W @240VAC

DEVICE DEVELOPMENT



- DEVICE LEGEND**
- E. I. -----ELECTRICALLY INTERLOCKED
 - E. O. -----ELECTRICALLY OPERATED
 - FU-----FUSE
 - HTR-----HEATER
 - KI-----KEY INTERLOCK MICROSWITCH AT HANDLE HOUSING
 - M-----MOTOR
 - MH-----MANUAL HANDLE KEY INTERLOCK MICROSWITCH
 - RB-----RESISTOR BANK
 - SOL-----SOLENOID
 - SW-----MICROSWITCH
 - TI-----KEY INTERLOCK MICROSWITCH AT MANUAL PULL TO TRIP
 - 5, 5X, 5Y, 5Z-----AUXILIARY RELAY
 - 23-----THERMOSTAT
 - 33-----SPRING CHARGE AUXILIARY SWITCH
 - 89-----LOAD BREAK INTERRUPTER SWITCH
 - 89/CL-----SWITCH POSITION AUXILIARY SWITCH ON MOTOR OPERATOR
 - 89/CL1, 89/OP1-----SWITCH POSITION AUXILIARY SWITCH ON SHAFT OF INTERRUPTER SWITCH
 - 89CS-----CONTROL SWITCH
 - 89ST-----SHUNT TRIP SOLENOID
 - 89X, 89Y-----REVERSING CONTACTOR
 - 89Z-----AUXILIARY RELAY
 - Ø ----- TERMINAL BLOCK POINT
 - × -----SHORTING TYPE TERMINAL BLOCK POINT
 - XX-----DEVICE DESIGNATION
 - LT-----MATCH LETTER AND SHEET NUMBER
 - SH-----GREEN INDICATING LIGHT
 - SH-----RED INDICATING LIGHT

SHEET 1 OF 4

REVISIONS		DESCRIPTION OF OPERATION		CUST. GENERAL ELECTRIC SUPPLY		Powercon Corp	
REV. PER WIRING DIAGRAM	05/31/00 AB/AG	N/A	SUMMARY	P.O. NO. 495-100329AA	ENGR. TONY BONDAR	TITLE INDOOR NEMA 12 METAL-ENCLOSED SWGR.,	WEB SITE http://www.powerconcorp.com
REV. AS BUILT AND TESTED	7/27/00 TB/ST/AG		S-15523		DATE 03/13/00	SERVICE 4.76KV, 5KV MAX. DESIGN,	
			FRONT VIEW		DATE 03/13/00	1200AMP, 3 PHASE, 3 WIRE, 60HZ, 60KV BIL	
			D-10724		DATE 03/13/00	STATION BRANDY BRANCH CT PROJECT	
			SCHEMATIC		DATE 03/13/00	LOCATION JACKSONVILLE, FL	
			CW-11981		DATE		
			WIRING DIAGRAM		DATE		
			LATER		DATE		
		THIS DRAWING AND ALL PREVIOUS ISSUES ARE THE SOLE PROPERTY OF THE POWERCON CORPORATION OF SEVERN, MARYLAND. NEITHER RECEIPT OF SAID DRAWING, NOR POSSESSION THEREOF, IMPLIES OR TRANSFERS ANY RIGHTS OR LICENCE TO USE THE DRAWINGS, OR THE SUBJECT MATTER, DESIGN, OR TECHNICAL INFORMATION SHOWN THEREON, OR ANY RIGHT TO COPY OR OTHERWISE REPRODUCE THIS DRAWING OR ANY PART THEREOF. NEITHER THIS DRAWING NOR ANY INFORMATION CONTAINED THEREIN, MAY BE COPIED, REPRODUCED OR OTHERWISE USED WITHOUT FIRST OBTAINING WRITTEN AUTHORIZATION OF THE POWERCON CORPORATION. PRINTS ARE LOANED SUBJECT TO RETURN UPON DEMAND, AND THE EXPRESS CONDITION THAT THEY WILL NOT BE USED IN ANY WAY DETRIMENTAL TO THE POWERCON CORPORATION.				SO#00-27971 CW-11981	
						REV. 2	